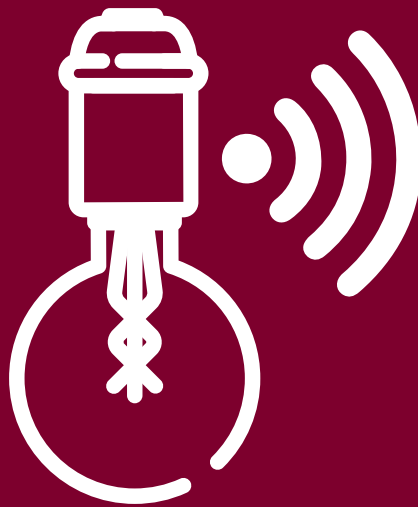




**creative
cables**



User Manual
WiFi Light Bulbs

MAIN FUNCTIONS

1. Manage your devices via your mobile phone or Voice Control.
2. Works with Amazon Alexa/Echo Dot&Google home & IFTTT.
3. Timer setting; Scene mode; Long range control.
4. Works with 2.4G frequency WiFi router
5. Support multiple devices connection at the same time

HOW TO CONNECT THE WIFI BULB TO YOUR DEVICES

Before making the connection,
make sure that the bulb is installed correctly
and connected to the power supply.

HOW IT WORKS

Step 1. Download Smart Life App.



Use your phone to scan the QR code below or
search "**smart life**" in application markets to
download and install the APP.

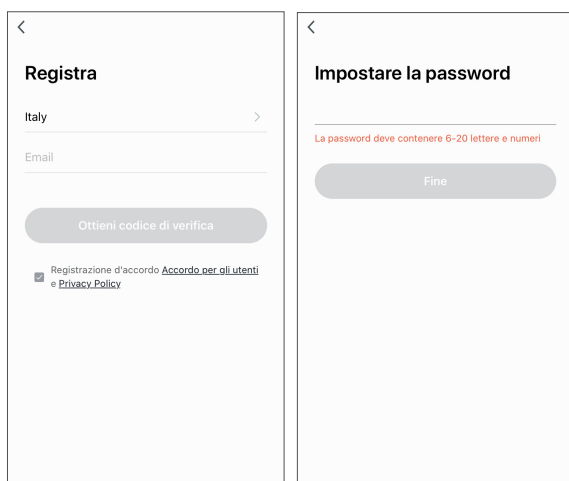


Step 2. Registration and login "smart life" APP

If you don't have a "Smart Life" APP account register an account or sign in with cellphone number/e-mail.

How to sign up:

1. Tap "Register"
2. The system automatically determines your country/area.
You can also select your country code by yourself.
Enter the cellphone number/e-mail and tap "Get Verification Code"
3. Enter the verification code in the message/e-mail
4. Enter the password, tap "Done" to finish your registration



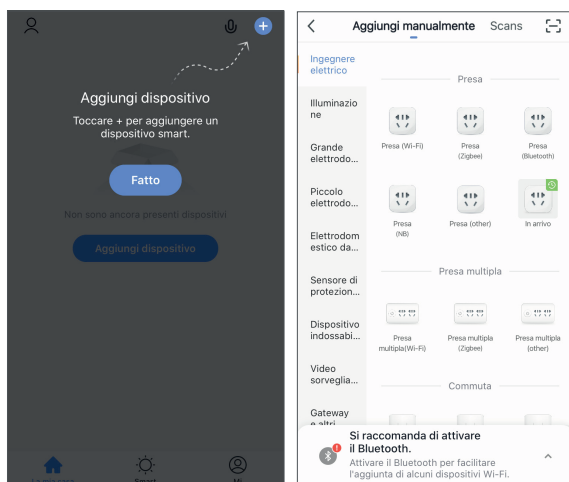
The image shows two side-by-side screenshots of the Smart Life app registration process. The left screenshot is titled "Registra" and shows a form with a dropdown menu for "Italy", an "Email" input field, a "Ottieni codice di verifica" button, and a checkbox for "Registrazione d'accordo [Accordo per gli utenti](#) e [Privacy Policy](#)". The right screenshot is titled "Impostare la password" and shows a red error message "La password deve contenere 6-20 lettere e numeri" above a "Fine" button.



YOUR LIGHT STYLE

Step 3. Connect device to Smar Life App

1. Make sure your phone is connected to wifi in your home.
Click "+" in the upper right corner of the homepage and select "**Lighting**" from the device type.



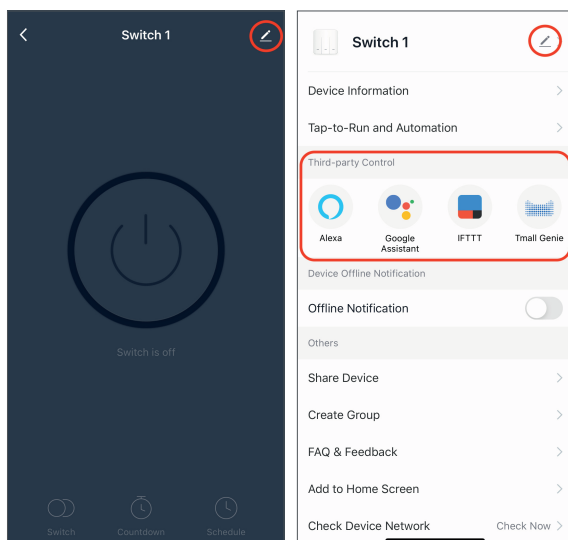
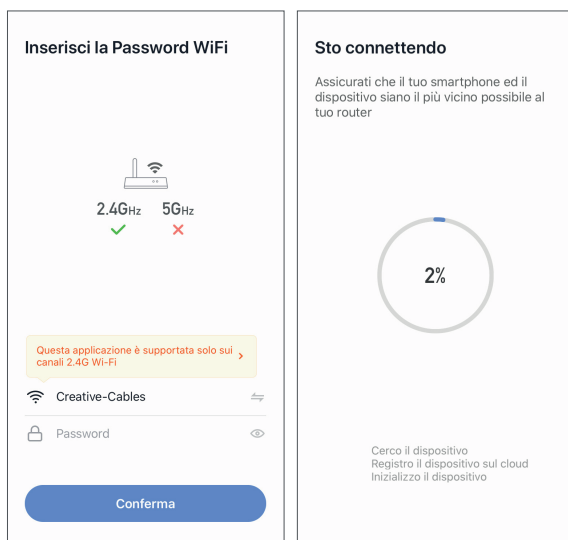
2. To connect the Light bulb to your WiFi ensure the light bulb is flashing quickly.
If the light bulb isn't flashing quickly when you have plugged in your switch, please do quickly switch off & turn on power 3 times to reset the device into connection mode.



N.B. If a bulb connection error occurs, please disconnect the power supply for 10 seconds before reconnecting

Step 4. Conclude configuration

1. Follow instructions on the screen to complete the configuration
2. Rename the device in order to easily recognize it
3. Connect it to third-party control (Amazon Alexa, Google Home, IFTTT) if available



YOUR LIGHT STYLE